

connecting

We combine reliability and durability with high efficiency.



FM LEAN-News!

Aluminium lateral guide

AS 40/45-38-L

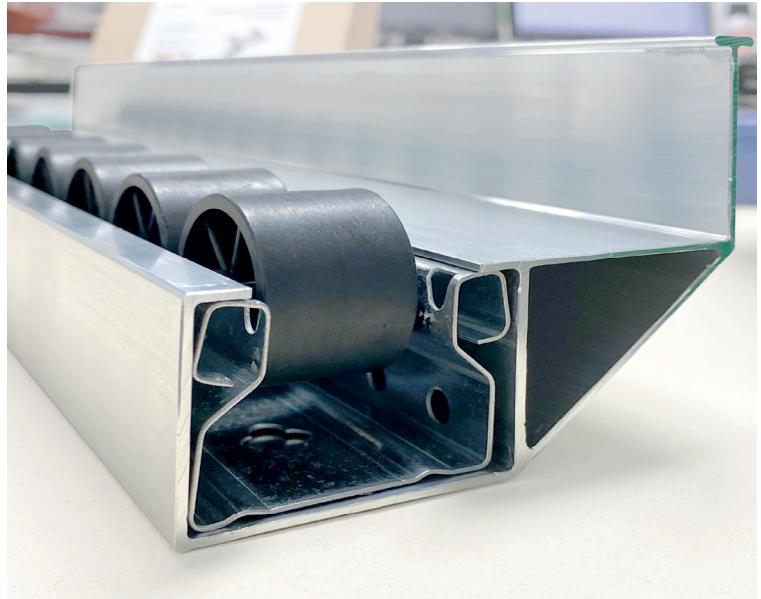
For FM Roller Tracks Type 40

Stay on track!

The aluminum side guide for roller tracks is the ideal solution for applications where **precision and stability** are critical. Thanks to its robust construction made from **high-quality aluminium**, it ensures a smooth and even operation of the roller rails without jamming or disruptions. Whether in **warehouse logistics, transport systems, or industrial conveyor systems**, the side guide ensures precise alignment and thus increases the efficiency of work processes.


With this aluminum side guide, **uninterrupted operation is guaranteed**, leading to a significant increase in productivity. The side guide is available in custom fixed lengths, allowing it to be tailored to any length of the **FM roller tracks from the Type 40 series**. The pronounced guide tabs eliminate the need for an additional side guide on an adjacent track.

Invest in reliability and precision – with the aluminum side guide for roller rails, you ensure a long-lasting and efficient process for your logistics system.



Aluminium lateral guide
Item No.: 08.00961.00

What makes the aluminium side guide special?

- Quick and easy installation of roller rails
- Dimensionally stable aluminum design with a bare surface for ESD conductivity 
- The roller track is suitable for containers with or without an ESD version, eliminating the need for double storage management
- Custom fixed lengths available upon customer request
- Pronounced guide tabs eliminate the need for an additional side guide on an adjacent track
- More durable and cost-effective than previous materials
- Heavy-duty versions available for larger loads

LEANPLUS



Sustainability
through durability and reduction of material consumption.



Maximization
of throughput with smooth guidance of containers.



Minimization
of waste such as downtime due to jamming, maintenance, etc.



Efficiency boost
through quick installation and reduced maintenance effort.

Take your LEAN Principles to the next Level:
Increase efficiency, reduce waste, and conserve resources with the aluminum side guide.

FIND OUT MORE NOW!

We are always available to answer any questions you may have.

+49 7262 6186-0  vertrieb@fm-systeme.com

Technical Specifications

Aluminium lateral guide for FM Roller Rail Type 40

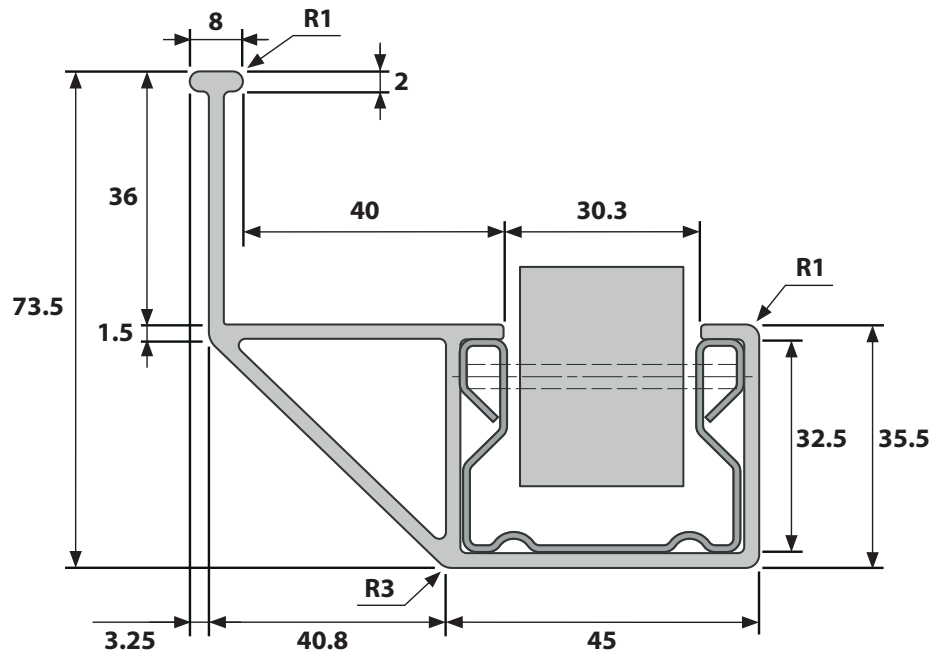
AS 40/45-38-L

Material

- Weight: 1.109 kg/m
- Material: AlMgSi0,5 F25 (EN AW 6063 T66)
- Manufactured according to EN 573-3, 755-2, and 12020-T2
- Surface: Bare finish

Features

- ESD conductivity 
- Suitable for various FM roller tracks of the type 40 series
- Guide distance 45 mm, height 38 mm
- Manufacturing length 4000 mm, custom fixed lengths available upon request



Get in touch with us and learn more about our aluminum side guide. Apply lean principles by increasing efficiency, reducing waste, and conserving resources – all key factors for a lean and effective system.

CONTACT US NOW

For more roller tracks, additional side guides, or entry guides, discover a wide selection in our ECO-Tube Connector System catalogue. Access it easily via QR code or by clicking the banner below.



https://www.fm-systeme.de/fileadmin/user_upload/2023-08-01_Katalog_ECO-Rohrstecksysteme_DE_FR_EN_web.pdf

