

connecting

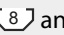

We combine speed and precision
with reliable stability



FM LEAN-Innovation!

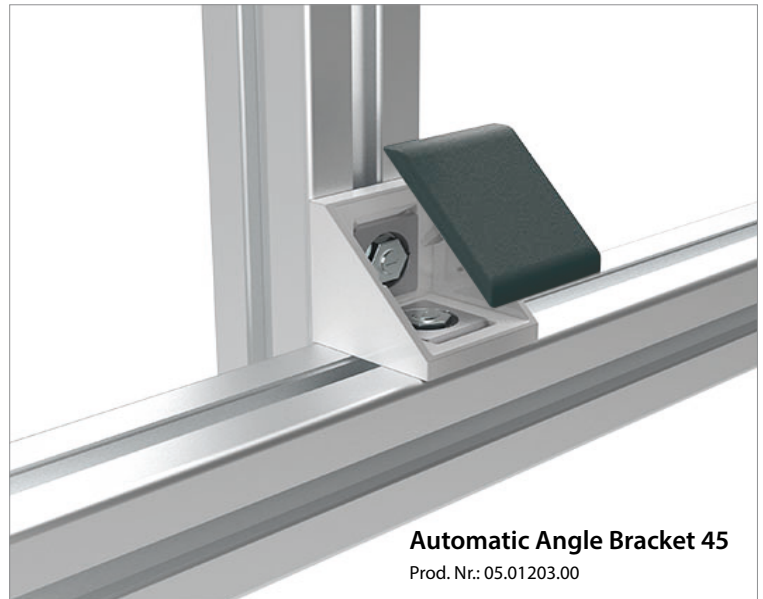
Automatic connector / angle bracket for aluminium profiles with groove

faster, smarter, more stable

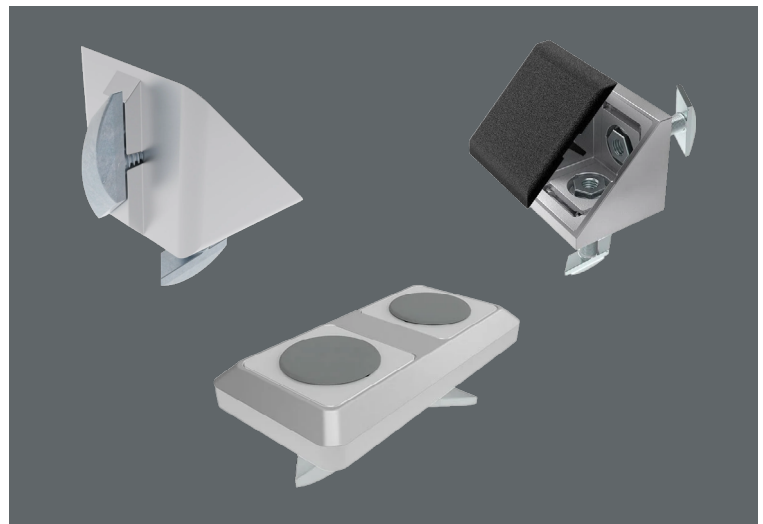
Optimize your assembly processes with innovative automatic aluminum brackets and connectors – the smart, stable solutions for **quick, right-angled, or parallel connections of profiles**. Designed for maximum efficiency, this solution enables simple profile connections in both longitudinal and transverse directions, specifically tailored to groove sizes  and .

Thanks to **pre-assembled magnetic rhombus screws** and countersunk nuts, the automatic connector can be **inserted directly and quickly into the profile groove**, ensuring precise positioning **without additional adjustment steps**. The slim design of the connectors minimizes material use and saves weight without compromising stability.



Additionally, the open side of the bracket, which can be closed with **matching cover caps**, provides a clean, modern appearance. Whether for industrial applications or demanding workshop needs, the automatic connectors offer reliable stability and precision that meet every challenge.



Automatic Angle Bracket 45
Prod. Nr.: 05.01203.00



What makes the automatic connectors / angle brackets special?

- Easy & faster assembly thanks to magnetic rhombus screws
- Time savings through faster picking due to fewer components
- Error-free assembly as all connecting components are fully pre-assembled
- Aesthetic & clean appearance with matching cover caps
- Compatibility with grooved aluminum profiles  
- Reduced storage space, as the relevant components are pre-assembled

LEANPLUS



Reduction
of rework through
optimized fit



Maximization
of throughput by
eliminating unnecessary
assembly steps



Minimization
of waste through guided
positioning into the profile
groove



Ergonomics
through fast assembly
without complex
adjustment steps

Take your LEAN principles to the next level:
The intelligent solution for precise and efficient profile connections.

FIND OUT MORE NOW!

We are always available to answer any questions you may have.

 +49 7262 6186-0  vertrieb@fm-systeme.com

Technical Specifications

Automatic connectors / angle brackets for aluminum profiles

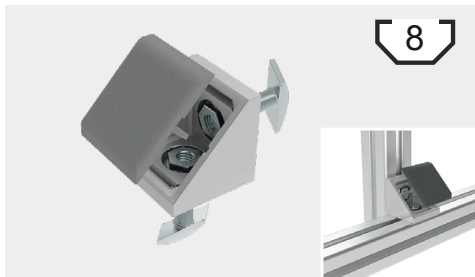
Material

- Connector plate / Angle bracket: Aluminum die-casting, powder-coated
- Magnetic rhombus screws: Steel, galvanized
- Countersunk nuts: Steel, galvanized
- Cover cap: Plastic PA, fiberglass reinforced
- Insert: Zinc die-casting
- Ring: Plastic PE

Color

- Connector plate / Angle bracket: Aluminium-colored
- Cover caps: Black or RAL 7042 (gray) upon request

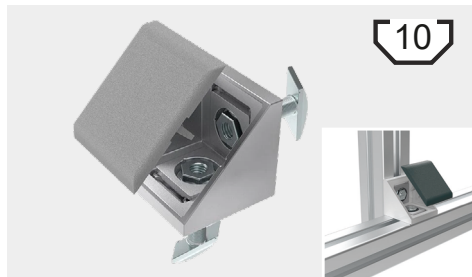
Automatic Angle Bracket 40 length/cross



05.00806.00 **5,32 € / pcs.** **5,16 € / pcs.**
from 10 pcs. (1 pu) from 100 pcs. (10 pu)

including cover cap gray

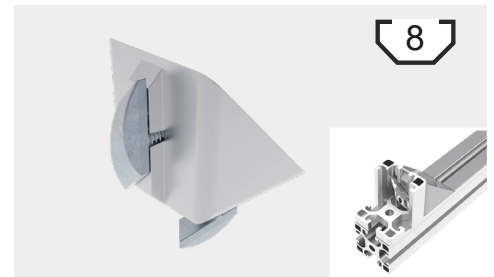
Automatic Angle Bracket 45 length/cross



05.01203.00 **5,55 € / pcs.** **5,39 € / pcs.**
from 10 pcs. (1 pu) from 100 pcs. (10 pu)

including cover cap gray

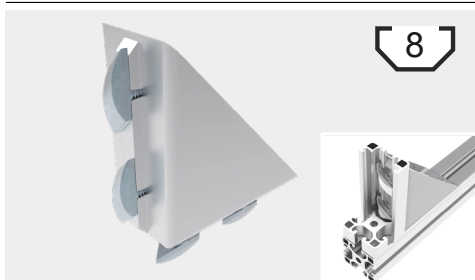
Automatic Angle Bracket 40



05.02258.00 **4,18 € / pcs.** **4,05 € / pcs.**
from 10 pcs. (1 pu) from 100 pcs. (10 pu)

Cover cap **0,46 € / pcs.** **0,45 € / pcs.**
05.02259.00 from 10 pcs. (1 pu) from 100 pcs. (10 pu)

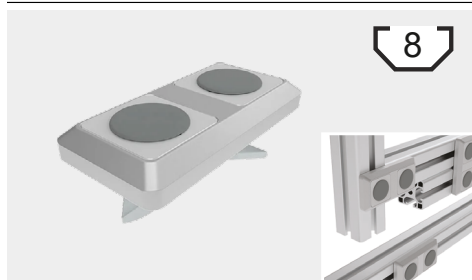
Automatic Angle Bracket 40 x 80



05.01675.00 **7,26 € / pcs.** **7,04 € / pcs.**
from 10 pcs. (1 pu) from 100 pcs. (10 pu)

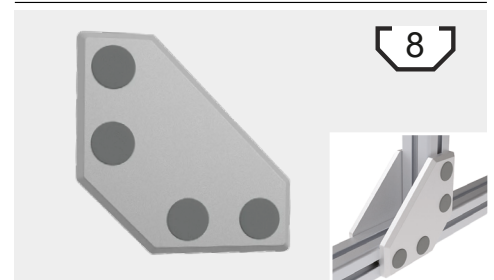
Cover cap **0,68 € / pcs.** **0,65 € / pcs.**
05.01676.00 from 10 pcs. (1 pu) from 100 pcs. (10 pu)

Automatic Connector Plate 40 length/cross



05.01501.00 **8,32 € / Stk.** **8,09 € / Stk.**
from 10 pcs. (1 pu) from 100 pcs. (10 pu)

Automatic Connector Plate 120



05.01753.00 **11,99 € / Stk.** **11,65 € / Stk.**
from 10 pcs. (1 pu) from 100 pcs. (10 pu)

Prices valid for all orders received until 31/12/2024

Contact us and learn more about our angle & connector technology. Leverage Lean principles by increasing efficiency, reducing waste, and conserving resources – the key factors that are crucial for a streamlined and high-performance system.

CONTACT US NOW

Looking for more connectors or angle brackets for aluminum profiles?
Explore a wide selection in our aluminum profile system catalog. Easily access it via
QR code or by clicking the banner.



https://www.fm-systeme.de/fileadmin/user_upload/2018-09-13_Katalog_Aluprofilsystem_DE-EN-FR_web.pdf

